

SC Type Pigtail



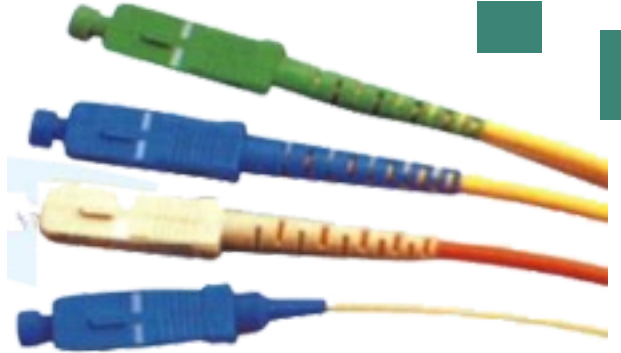
Applications

Telecommunication Networks

CATV Networks

Active Device Termination

Local Area Networks



Features and Benefits

Compliant with: ANSI, Bellcore, TIA/EIA, IEC Standards.

Low Insertion Loss and High Return Loss

Excellent Repeatability and Changeability

Simplex and Duplex Available

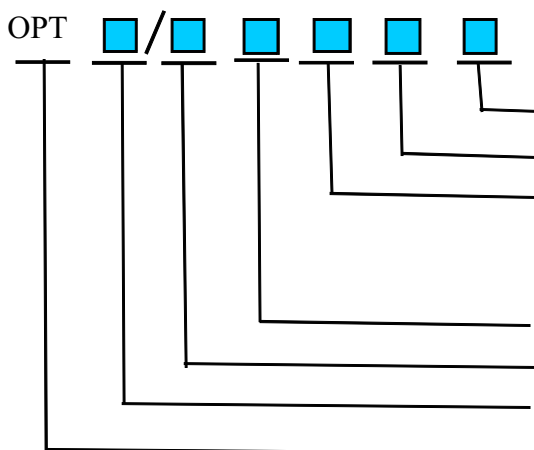
With Ceramic Ferrules

Optical performance 100% factory tested

Specification

Characteristics	Conditions	Values
Insertion Loss	Against Reference Connector	< 0.2dB
Return Loss	PC	> 45dB
	UPC	> 55dB
	APC	> 65dB
Durability	1000times	< 0.2dB
Impact	1.5mm drop, 8 times	< 0.2dB
Operating temperature	-20°C~+70°C	
Cable outer diameter	900um, 1.6mm, 2.0mm, 3.0mm	

Ordering Information



Cord Diameter: 0.9mm, 1.6mm, 2.0mm, 3.0mm

Cord Type S: simplex; D: duplex

Fiber SM: Singlemode(9/125um yellow)

MM: Multimode(50/125um orange)

MM: Multimode(62.5/125um orange)

Length: 1~99m

Polishing Grass (PC, UPC, APC)

Connector: SC

Optical Pigtail